



# EVO Companion CWIS™ Technical Information

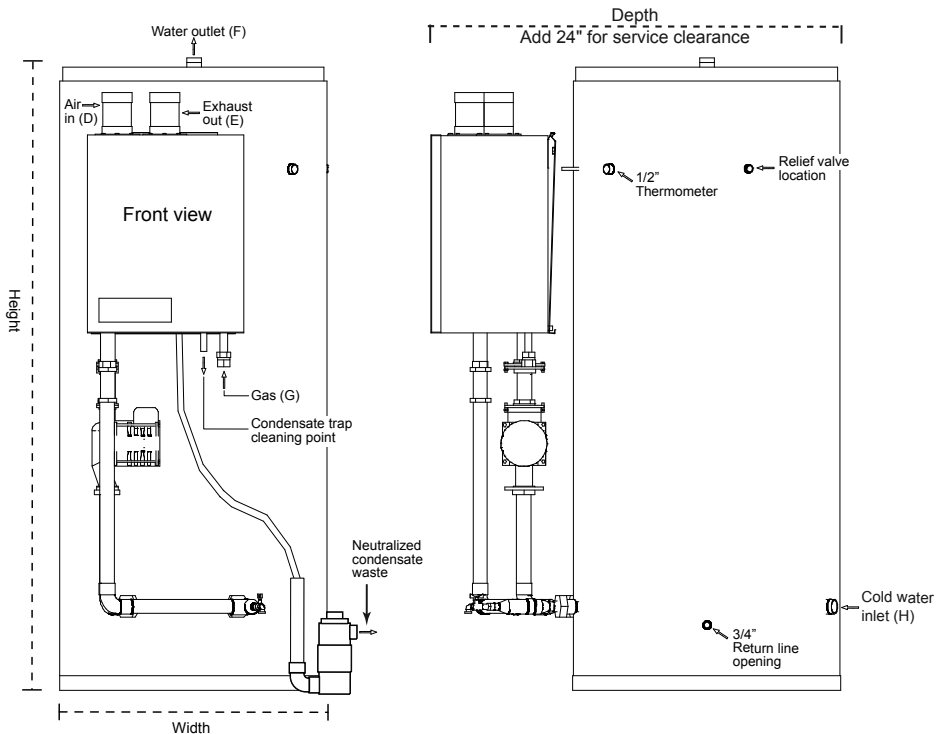


## Standard Equipment

- 316L stainless steel heat exchanger
- Modulating stainless steel burner
- Self diagnostic microprocessor controls
- Externally adjustable thermostat
- Sealed combustion
- PVC or AL 29-4C stainless vent
- Stainless steel cover
- Water flow switch
- Pressure relief valve
- Dual high limit sensors
- All bronze circulating pump
- Blocked flue/ blocked condensate drain pressure switch
- 444 Stainless steel tank
- CWIS™ patent pending Cold Water Injection System
- All stainless steel tank fittings
- 24/7 customer service

## Optional Equipment

- Piping manifolds on multiple units
- Cascade controls on multiple units
- Common venting on multiple units



•Dimensions are not for construction purposes. For exact measurements consult the factory.

Model	Width	Height	Depth	D	E	F (MPT)	G (FPT)	H (MPT)	R (MPT)	Cold Inlet - Height From Floor
HWD 129-80 CWIS	24"	70"	37"	3"	3"	1.5"	0.75"	1.5"	0.5"	10.1"
HWD 199-80 CWIS	24"	70"	37"	3"	3"	1.5"	0.75"	1.5"	0.5"	10.1"
HWD 129-119 CWIS	29"	66"	42"	3"	3"	1.5"	0.75"	1.5"	0.5"	11.7"
HWD 199-119 CWIS	29"	66"	42"	3"	3"	1.5"	0.75"	1.5"	0.5"	11.7"

Model	Input BTU/hr	Water Heater* Output BTU/hr	Storage	GPH Recovery @ 80°FΔT	First Hour Delivery @100°FΔT	First hour Delivery @ 80°FΔT	First Hour Delivery @ 60°FΔT	Shipping Weight
HWD 129-80 CWIS	136,300	up to 134,937	80	202	274	303	341	255 lbs.
HWD 199-80 CWIS	199,999	up to 197,999	80	297	368	411	467	259 lbs.
HWD 129-119 CWIS	136,300	up to 134,937	119	202	310	339	377	268 lbs.
HWD 199-119 CWIS	199,999	up to 197,999	119	297	404	447	503	272 lbs.

•Maximum amperage draw at 230 volts single phase is less than 3 amps  
 \*At 99% thermal efficiency with 60°F incoming water to heat exchanger  
 \*\*160 Gallon tank available ASME only

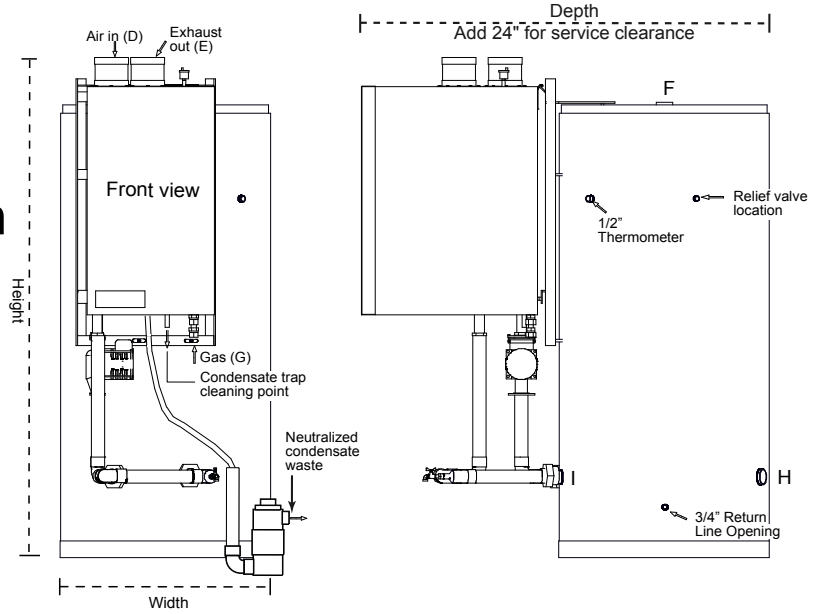
See reverse side for Glass-Lined steel tank and ASME options





# EVO Companion Glass-Lined CWIS™ Technical Information

- Standard Equipment same as Stainless model
- Glass-Lined Steel Tank with 304 Stainless Materials



•Dimensions are not for construction purposes. For exact measurements consult the factory.

Model	Width	Height	Depth	D	E	F (MPT)	G (FPT)	H	I (MPT)	Cold Inlet - Height From Floor
HWDG 129/199-80 CWIS	24"	63.5"	40"	3"	3"	1.5"	0.75"	1.5"	1"	5.75"
HWDG 129/199-119 CWIS	28"	68.5"	45"	3"	3"	1.5"	0.75"	1.5"	1"	6.75"
HWDG 129/199-119 ASME CWIS	28"	63.5"	40"	3"	3"	2.5"	0.75"	2.5"	2"	8.75"
HWDG 299/399-119 ASME CWIS	28"	68.5"	53"	4"	4"	2.5"	0.75"	2.5"	2"	8.75"
HWDG 599-119 ASME CWIS	28"	68.5"	61"	5"	5"	2.5"	1"	2.5"	2"	8.75"
HWDG 199-160 ASME CWIS**	32"	72"	48"	3"	3"	2.5"	0.75"	2.5"	2"	9.75"
HWDG 299/399-160 ASME CWIS**	32"	72"	57"	4"	4"	2.5"	0.75"	2.5"	2"	9.75"
HWDG 599-160 ASME CWIS**	32"	72"	65"	5"	5"	2.5"	1"	2.5"	2"	9.75"

Model	Input BTU/hr	Water Heater* Output BTU/hr	Storage	GPH Recovery @ 80°FΔT	First Hour Delivery @ 100°FΔT	First hour Delivery @ 80°FΔT	First Hour Delivery @ 60°FΔT	Shipping Weight
HWDG 129-80 CWIS	136,300	134,937	80	202	254	295	362	335 lbs.
HWDG 129-119 CWIS	136,300	134,937	119	202	299	340	407	460 lbs.
HWDG 199-80 CWIS	199,999	197,999	80	297	330	389	488	339 lbs.
HWDG 199-119 CWIS	199,999	197,999	119	297	375	434	533	474 lbs.
HWDG 199-160 CWIS**	199,999	197,999	160	297	422	481	580	559 lbs.
HWDG 299-119 CWIS	300,000	297,000	119	446	494	583	731	556 lbs.
HWDG 299-160 CWIS**	300,000	297,000	160	446	541	630	779	641 lbs.
HWDG 399-119 CWIS	399,999	395,999	119	594	612	731	929	639 lbs.
HWDG 399-160 CWIS**	399,999	395,999	160	594	660	779	977	724 lbs.
HWDG 599-119 CWIS	630,000	623,700	119	936	886	1,073	1385	679 lbs.
HWDG 599-160 CWIS**	630,000	623,700	160	936	933	1,120	1432	764 lbs.

•Maximum amperage draw at 230 volts single phase is less than 3 amps

\*At 99% thermal efficiency with 60° F incoming water to heat exchanger

\*\*160 Gallon tank available ASME only

